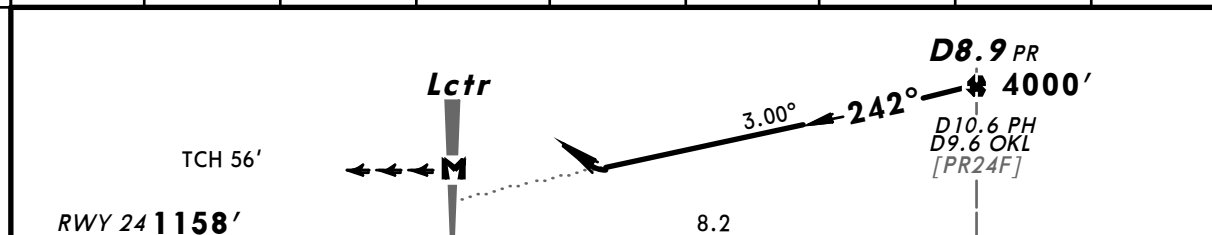
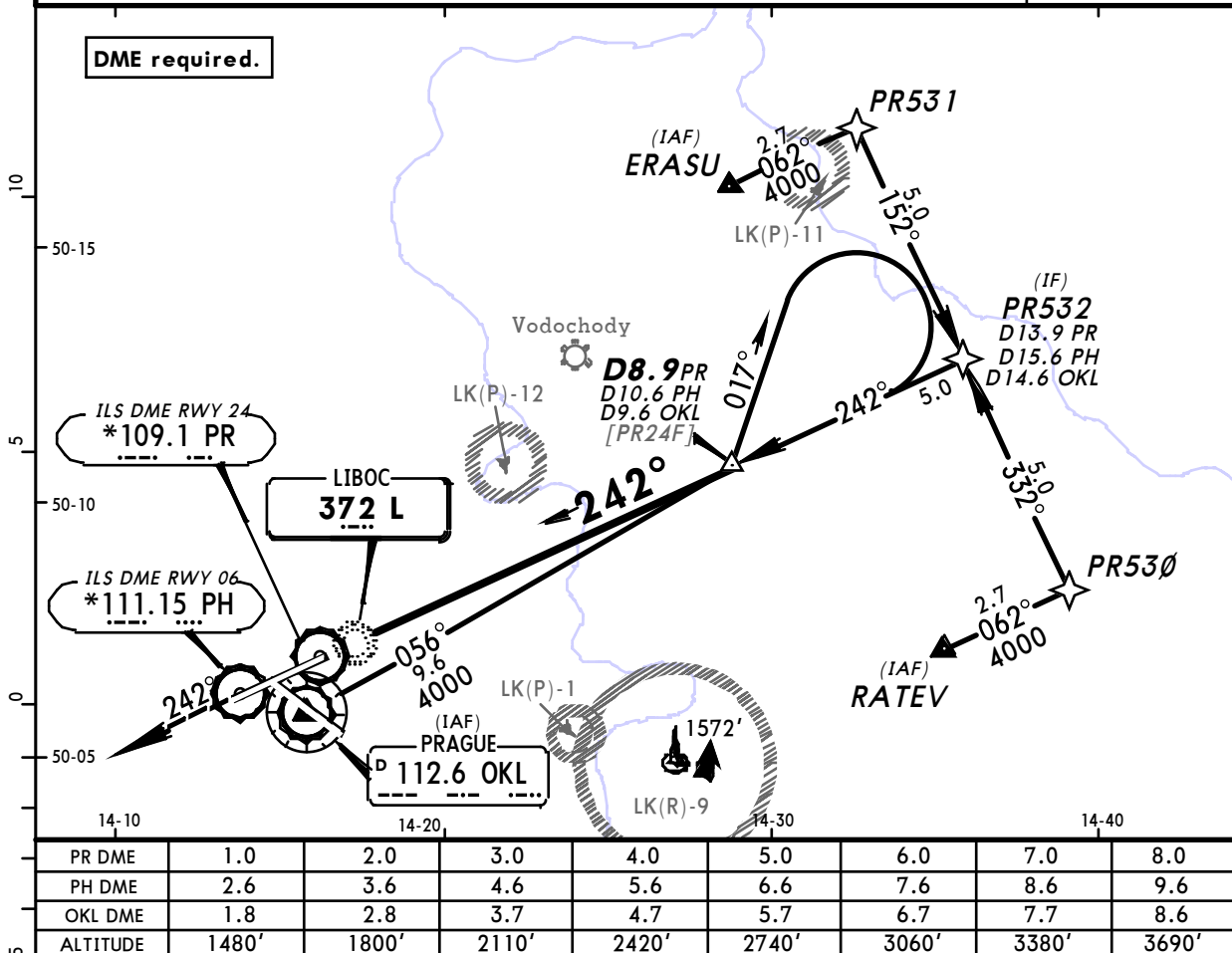
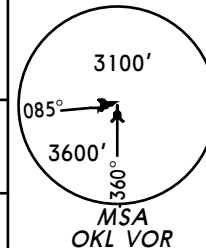


LKPR/PRG  
RUZYNE

JEPPSEN  
20 APR 12 (16-2) Eff 3 May

PRAGUE, CZECH  
NDB Rwy 24

ATIS 122.15	PRAGUE Radar (APP) 120.52 127.57	*RUZYNE Radar (APP) 119.0	RUZYNE Tower 118.1	*Ground 121.9
Lctr L 372	Final Apch Crs 242°	Minimum Alt D8.9 PR 4000' (2842')	DA(H) 1460' (302')	Apt Elev 1247' RWY 1158'
<b>MISSED APCH:</b> Climb on 242° to 4000'. Radar vectoring will be provided. <b>MISSED APCH WITH COMM FAILURE:</b> Climb on 242° to 4000'. At D10.0 OKL turn RIGHT to VOR and climb to 5000'.				
Alt Set: hPa (MM on req) Rwy Elev: 42 hPa Trans level: By ATC Trans alt: 5000' Acft not equipped for P-RNAV expect radar vectoring after IAF RATEV and ERASU.				



Gnd speed-Kts	70	90	100	120	140	160
Descent Angle	3.00°	372	478	531	637	743
MAP at Lctr						

Standard			Circle-to-Land		
STRAIGHT-IN LANDING RWY 24					
DA(H) 1460' (302')					
ALS out			Max Kts	MDA(H)	VIS
			100	1650' (403')	1500m
			135	1750' (503')	1600m
			180	1850' (603')	2400m
			D	NOT AUTHORIZED	

Not authorized East of apt between extended RCL 06/24 & 12/30.

CHANGES: RWY 13/31 redesignated 12/30.

© JEPPESEN, 2000, 2012. ALL RIGHTS RESERVED.